



India Meteorological Department  
(Ministry of Earth Sciences)

National Bulletin No. 27 (ARB/02/2025)

TIME OF ISSUE: 1445 HOURS IST

DATED: 05.10.2025

FROM: INDIA METEOROLOGICAL DEPARTMENT (FAX NO. 24643965/24699216/24623220)  
TO: CONTROL ROOM, NDM, MINISTRY OF HOME AFFAIRS (FAX.NO. 23093750)  
CONTROL ROOM NDMA (FAX.NO. 26701729)  
CABINET SECRETARIAT (FAX.NO.23012284, 23018638)  
PS TO HON'BLE MINISTER FOR S & T AND EARTH SCIENCES (FAX NO.23316745)  
SECRETARY, MOES (FAX NO. 24629777)  
H.Q. (INTEGRATED DEFENCE STAFF AND CDS) (FAX NO. 23005137/23005147)  
D.G. INDIAN COAST GUARD: (FAX No. 011-23383196)  
DIRECTOR GENERAL, DOORDARSHAN (23385843)  
DIRECTOR GENERAL, AIR (23421105, 23421219)  
PIB MOES (FAX NO. 23389042)  
UNI (FAX NO. 23355841)  
D.G. NATIONAL DISASTER RESPONSE FORCE (NDRF) (FAX NO. 26105912, 2436 3260)  
DIRECTOR, PUNCTUALITY, INDIAN RAILWAYS (FAX NO. 23388503)  
CHIEF SECRETARY, MAHARASHTRA (FAX NO. 022-22028594)  
CHIEF SECRETARY, GUJARAT (FAX NO. 079-23250305)  
CHIEF SECRETARY, GOA (FAX NO. 0832-2415201)  
CHIEF SECRETARY, KARNATAKA (FAX NO. 080-22258913)  
CHIEF SECRETARY, KERALA (FAX NO. 0471-2327176)  
ADMINISTRATOR, DADRA & NAGAR HAVELI (FAX NO. 0260-2645466/ 22307000 )  
ADMINISTRATOR, DAMAN & DIU (FAX NO. 0260-2230775 )  
ADMINISTRATOR, LAKSHADWEEP (FAX NO. 04896- 268124)

**Subject: Severe Cyclonic Storm “Shakhti” [Pronunciation: Shakhti] over northwest & adjoining westcentral Arabian Sea**

The severe cyclonic storm “Shakhti” [Pronunciation: Shakhti] over northwest & adjoining Westcentral Arabian Sea moved west-southwestwards with a speed of 15 kmph during last 6 hours and lay centered at 1130 hrs IST of today, the 5th October, 2025 over the same region, near latitude 20.8°N and longitude 61.0°E, about 210 km southeast of Ras Al Hadd (Oman), 220 km east of Masirah (Oman), 780 km southwest of Karachi (Pakistan), 850 km west-southwest of Naliya and 850 km west of Dwarka.

It is likely to continue to move west-southwestwards and weaken gradually into a cyclonic storm by morning of 6th October. Thereafter, it will recurve and move nearly eastwards over westcentral & adjoining northwest Arabian Sea and weaken further into a depression by 7th October forenoon.

**Forecast location and intensity are given in following table:**

Date/Time (IST)	Position (Lat. °N/ long. °E)	Maximum sustained surface wind speed (Kmph)	Category of cyclonic disturbance
05.10.25/1130	20.8/61.0	105-115 gusting to 125	Severe Cyclonic Storm
05.10.25/1730	20.6/60.5	100-110 gusting to 120	Severe Cyclonic Storm
05.10.25/2330	20.2/60.1	90-100 gusting to 110	Severe Cyclonic Storm
06.10.25/0530	20.0/60.0	80-90 gusting to 100	Cyclonic Storm
06.10.25/1130	19.9/60.0	70-80 gusting to 90	Cyclonic Storm
06.10.25/2330	19.7/60.2	55-65 gusting to 75	Deep Depression
07.10.25/1130	19.5/60.7	40-50 gusting to 60	Depression

**Wind warning:**

- Gale wind speed reaching 105-115 kmph gusting to 125 kmph is prevailing over northwest & adjoining Westcentral Arabian Sea. It would gradually decrease becoming 80-90 kmph gusting to 100 kmph by 5<sup>th</sup> midnight over Westcentral & adjoining Northwest Arabian Sea. Winds would further decrease becoming 70-80 kmph gusting to 90 kmph by noon of 6<sup>th</sup> October.
- Squally wind speed reaching 55-65 kmph gusting to 75 kmph is likely to prevail over Westcentral & adjoining Northwest Arabian Sea from midnight of 6<sup>th</sup> October and becoming 40-50 kmph gusting to 60 kmph by noon of 7<sup>th</sup> October.
- Squally weather with wind speed reaching 35-35 kmph gusting to 55 kmph is very likely to prevail over Northeast Arabian Sea and along & off Saurashtra & Kutch coasts till 6<sup>th</sup> October.

**Sea condition:**

- Sea condition is very likely to be very high to high over Northwest and adjoining Westcentral Arabian Sea till 6<sup>th</sup> October forenoon. Thereafter, it is likely to become very rough to rough over westcentral and adjoining northwest Arabian Sea till 7<sup>th</sup> October.
- Sea condition is very likely to be rough over Northeast Arabian Sea and along & off Saurashtra and Kutch Coasts till 6<sup>th</sup> October.

**Fishermen warnings:**

Fishermen are advised not to venture into Westcentral & Northwest Arabian Sea till 7<sup>th</sup> October and adjoining areas of northeast Arabian Sea & along and off Saurashtra & Kutch coasts till 6<sup>th</sup> October.

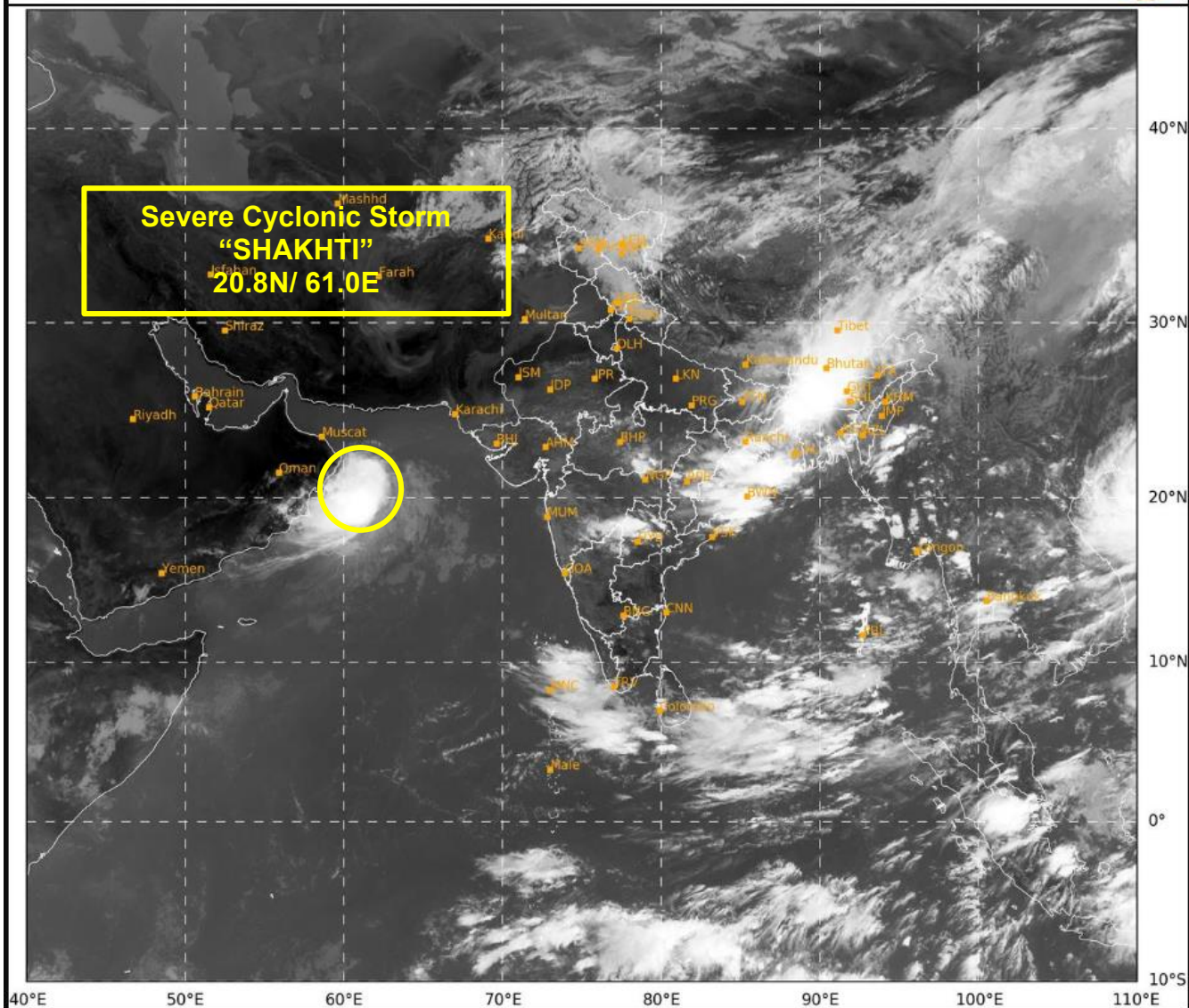
**Next Bulletin will be issued at 1730 hrs IST of today, the 5<sup>th</sup> October, 2025.**

**(Dr. Akhil Srivastava)**  
**Scientist-D, IMD, New Delhi**

*Copy to: ACWC Mumbai/ CWC Ahmedabad/CWC Thiruvananthapuram/Meteorological Centres  
/Ahmedabad/Goa/Bengaluru/Aminidivi*

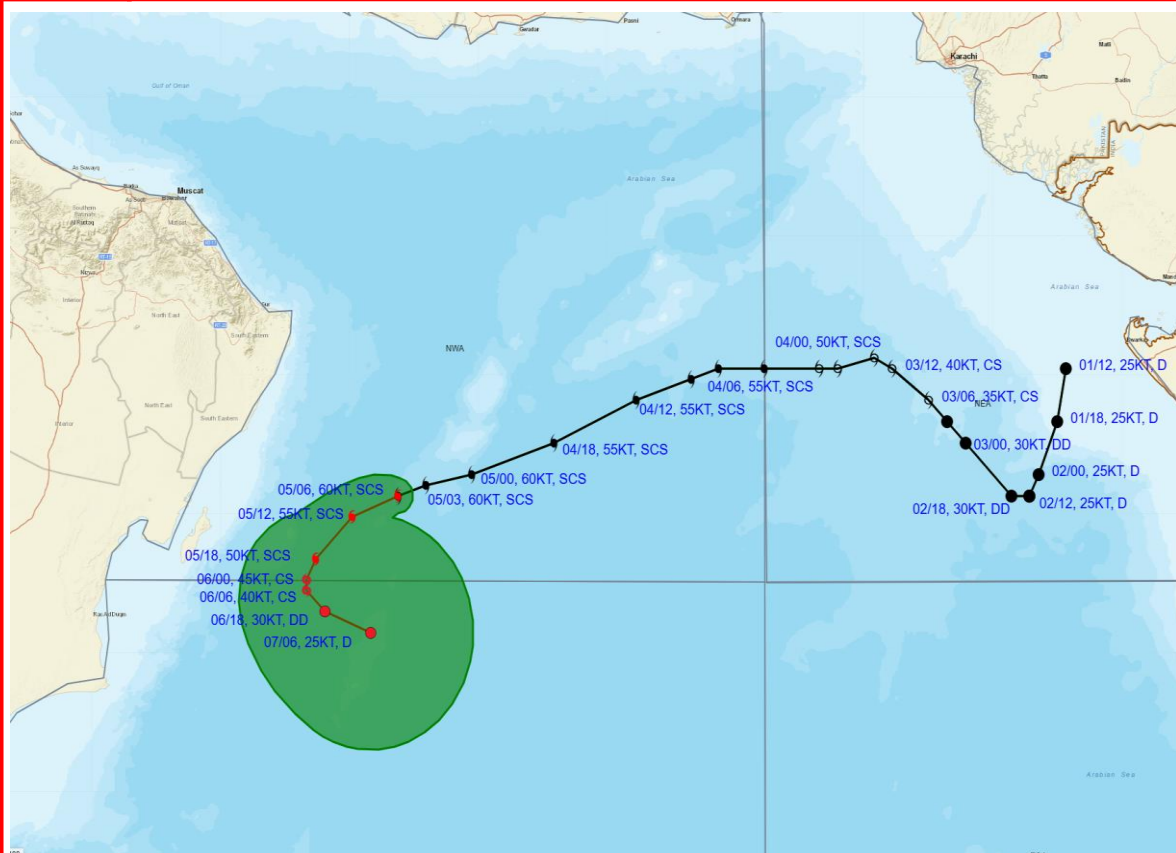
SAT : INSAT-3DR IMG  
IMG\_TIR1 10.8 um  
L1C Mercator

05-10-2025/(0615 to 0641) GMT  
05-10-2025/(1145 to 1211) IST





**OBSERVED AND FORECAST TRACK OF SEVERE CYCLONIC STORM  
'SHAKTI' OVER NORTHWEST AND ADJOINING WESTCENTRAL ARABIAN  
SEA BASED ON 0600 UTC (1130 IST) OF 5TH OCTOBER, 2025**



**DATE/TIME IN UTC**

**IST = UTC + 0530**

**L: LOW PRESSURE AREA**

**WML: WELL MARKED LOW PRESSURE AREA**

**D: DEPRESSION (17-27 KT)**

**DD: DEEP DEPRESSION (28-33 KT)**

**CS: CYCLONIC STORM (34-47 KT)**

**SCS: SEVERE CYCLONIC STORM (48-63 KT)**

**VSCS: VERY SEVERE CYCLONIC STORM (64-89 KT)**

**ESCS: EXTREMELY SEVERE CYCLONIC STORM (90-119 KT)**

**SuCS: SUPER CYCLONIC STORM  $\geq 120$  KT**

**1 KT = 1.85 KMPH**



**LESS THAN 34 KT**



**34-47 KT**



**$\geq 48$  KT**



**OBSERVED TRACK**



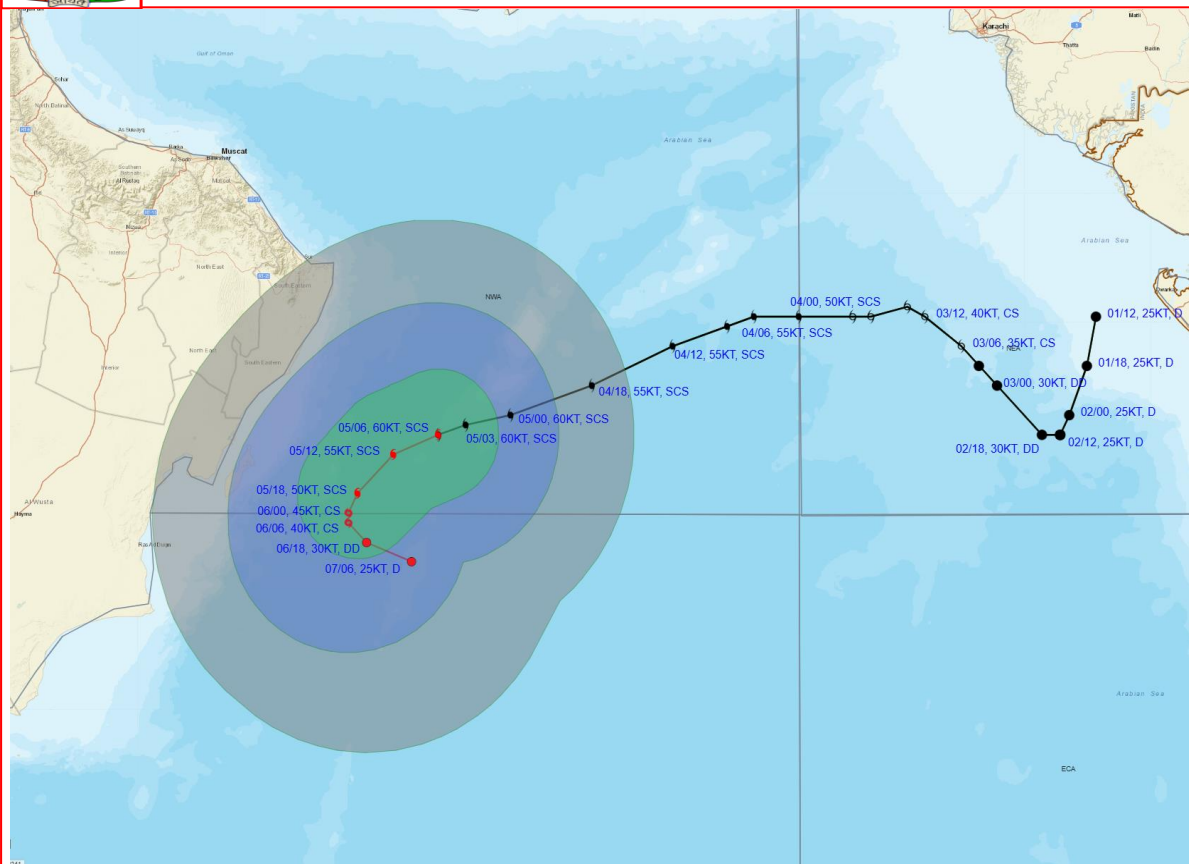
**FORECAST TRACK**



**CONE OF UNCERTAINTY**



**OBSERVED AND FORECAST TRACK ALONGWITH QUADRANT WIND DISTRIBUTION OF SEVERE CYCLONIC STORM 'SHAKHTI' OVER NORTHWEST AND ADJOINING WESTCENTRAL ARABIAN SEA BASED ON 0600 UTC (1130 IST) OF 5TH OCTOBER, 2025**



DATE/TIME IN UTC  
IST = UTC + 0530  
L: LOW PRESSURE AREA  
WML: WELL MARKED LOW PRESSURE AREA  
D: DEPRESSION (17-27 KT)  
DD: DEEP DEPRESSION (28-33 KT)  
CS: CYCLONIC STORM (34-47 KT)  
SCS: SEVERE CYCLONIC STORM (48-63 KT)  
VSCS: VERY SEVERE CYCLONIC STORM (64-89 KT)  
ESCS: EXTREMELY SEVERE CYCLONIC STORM (90-119 KT)  
SuCS: SUPER CYCLONIC STORM  $\geq 120$  KT

1 KT = 1.85 KMPH

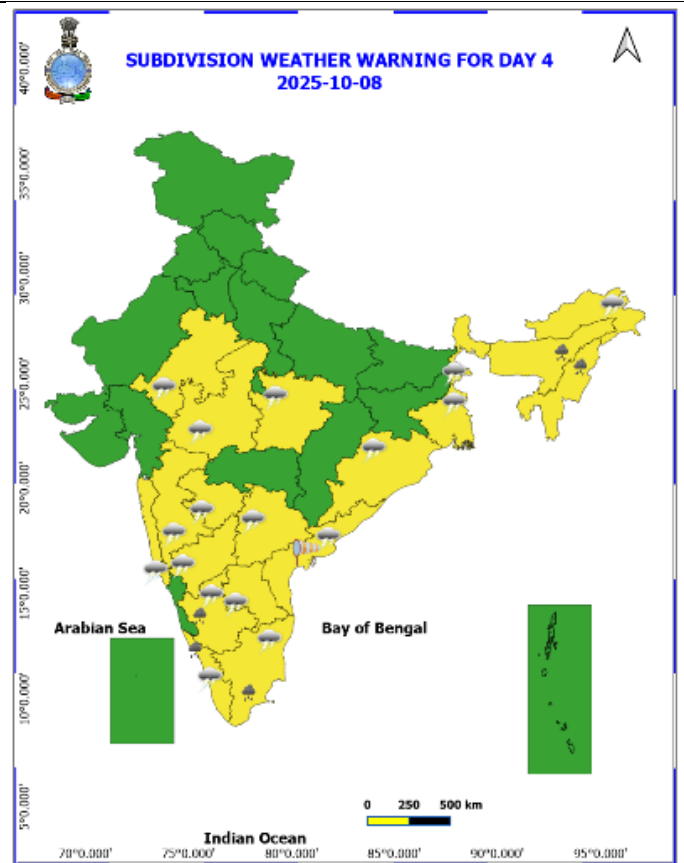
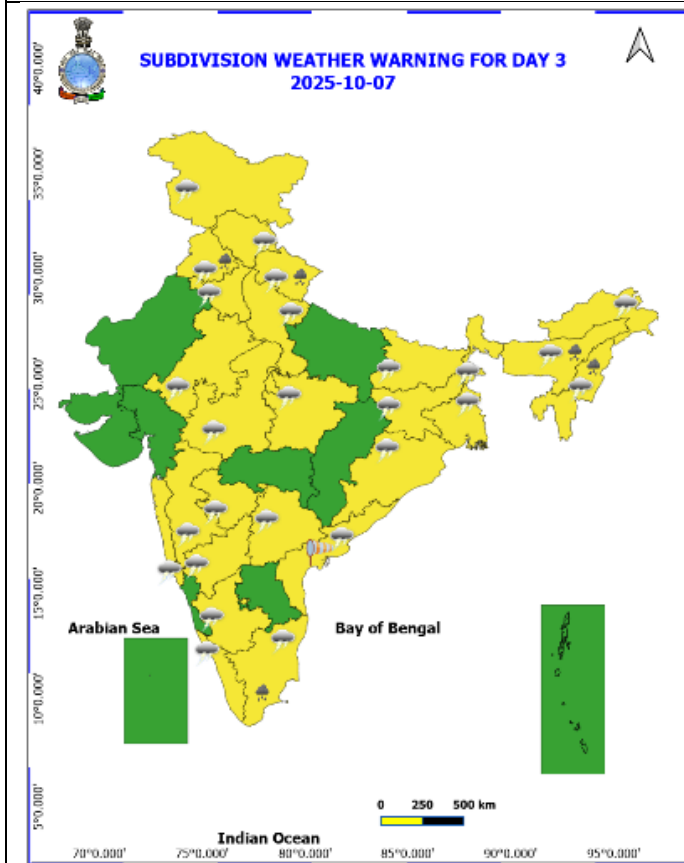
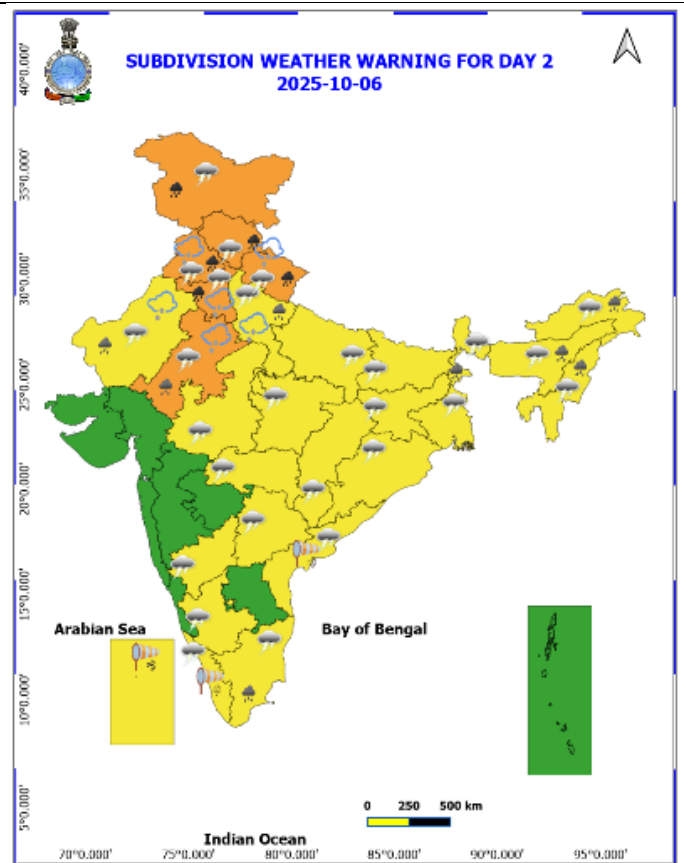
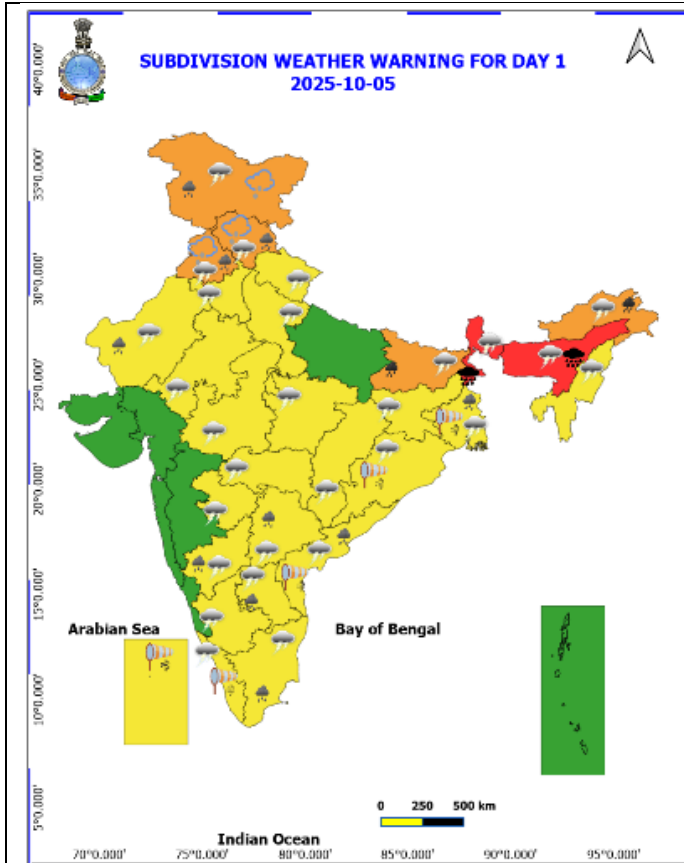
● LESS THAN 34 KT  
○ 34-47 KT  
●  $\geq 48$  KT  
— OBSERVED TRACK  
— FORECAST TRACK  
— CONE OF UNCERTAINTY  
AREA OF MAXIMUM SUSTAINED WIND SPEED:  
28-33 KT (52-61 KMPH)  
34-49 KT (62-91 KMPH)  
50-63 KT (92-117 KMPH)  
 $\geq 64$  KT ( $\geq 118$  KMPH)

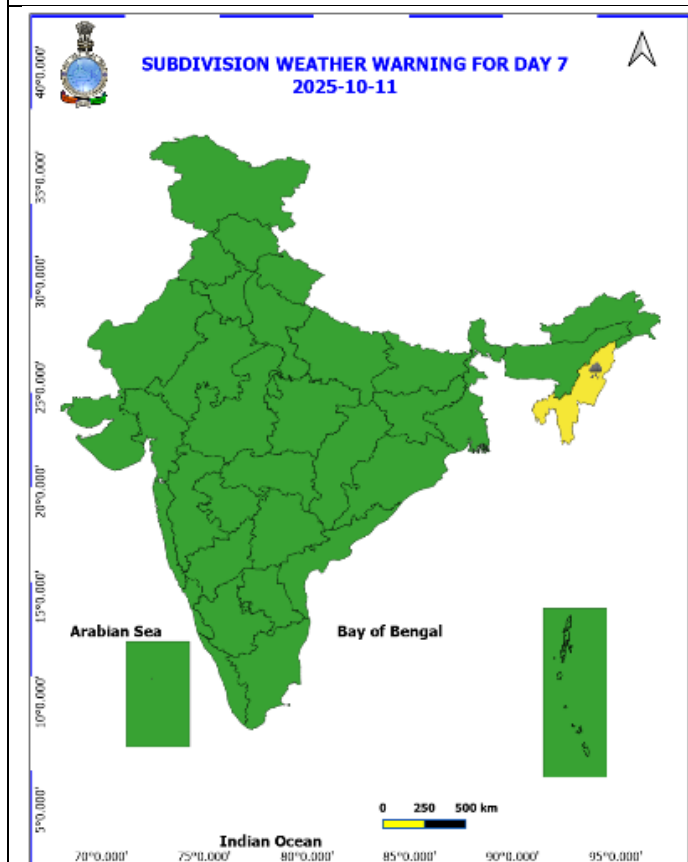
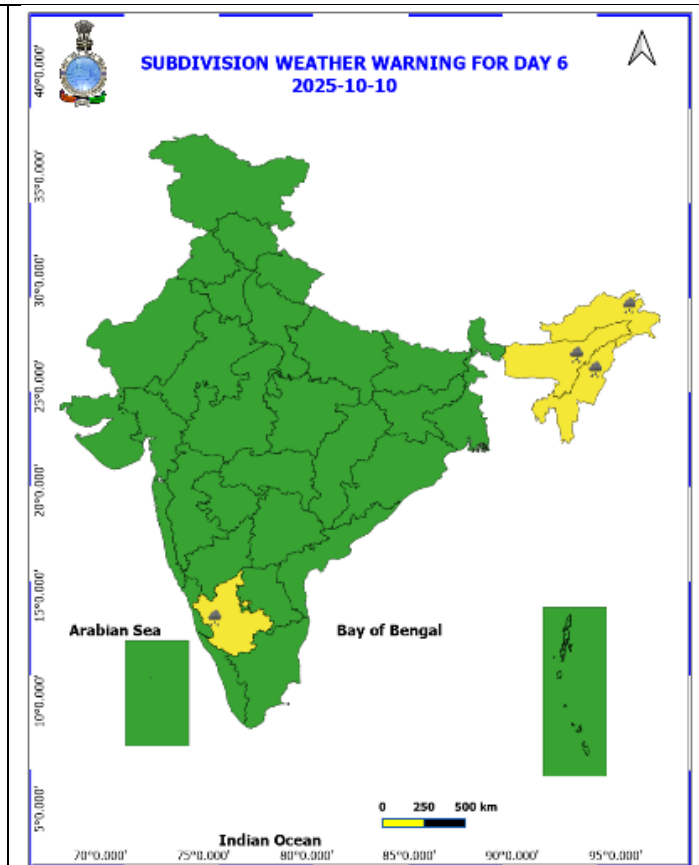
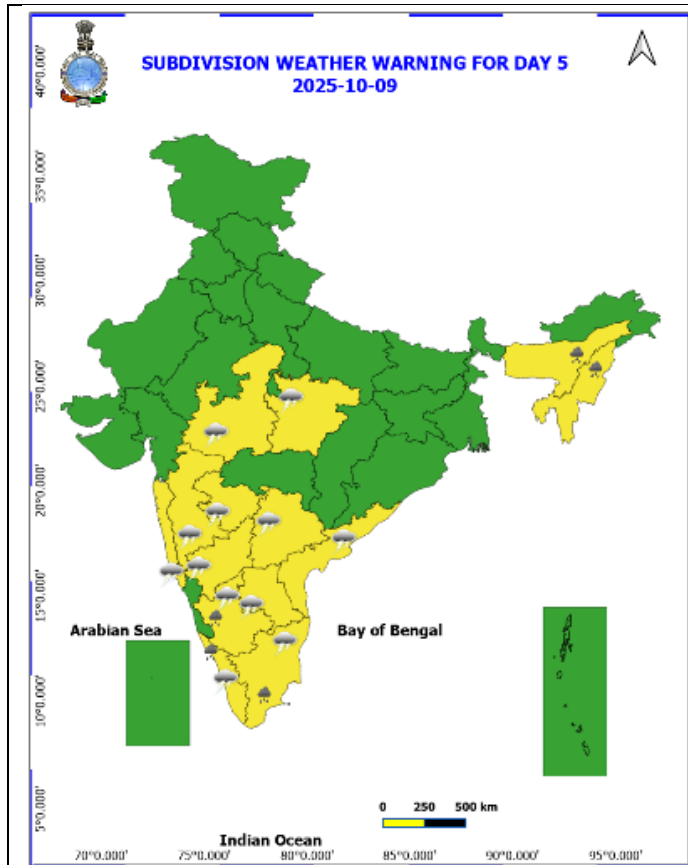
**IMPACT OVER THE SEA**

MSW (knot/kmph)	Impact	Action
28-33 (52-61)	Very rough seas	Total suspension of fishing operations
34-49 (62-91)	High to very high seas	Total suspension of fishing operations
50-63 (92-117)	Very high seas	Total suspension of fishing operations
$\geq 64$ ( $\geq 118$ )	Phenomenal	Total suspension of fishing operations



## Weather Warning Graphics





## Legends

 Fog

 Heavy Rain

 Very Heavy Rain

 Extremely Heavy Rain

 Thunder & Lightning

 Hailstorm

 Dust Raising Winds

 Heavy Snow

 Dust Storm

 Heat Wave

 Warm Night

 Hot Day

 Hot & Humid

 Strong Surface Winds

 Cold Wave

 Cold Day

 Ground Frost

COLOUR CODED WARNING

No Warning (No Action)

Watch (Be Aware)

Alert (Be Prepared To Take Action)

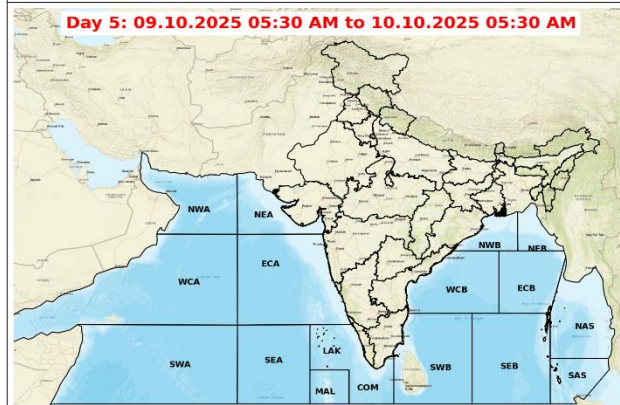
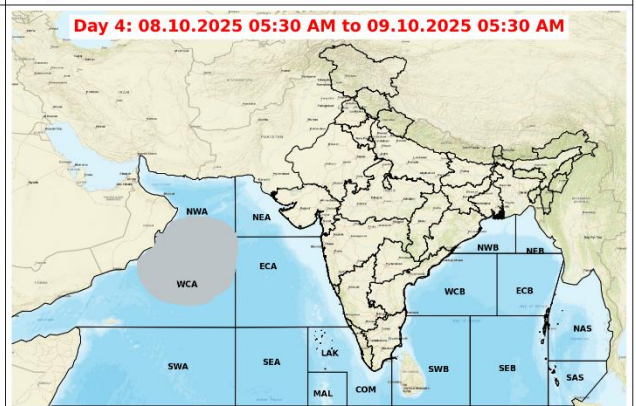
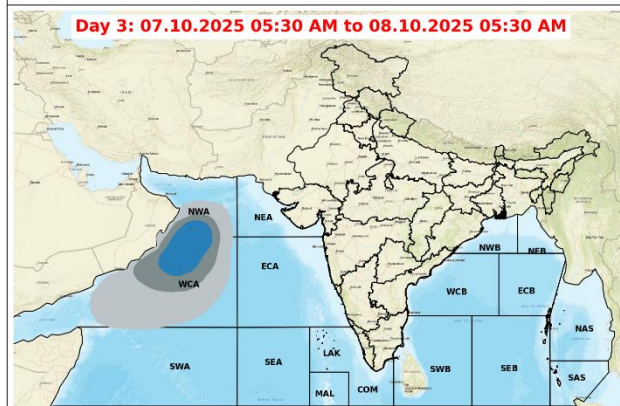
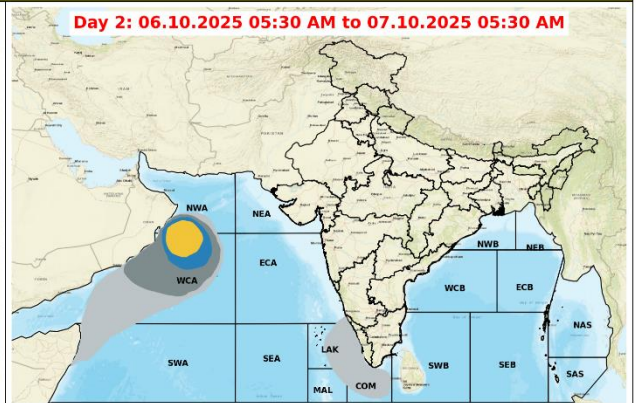
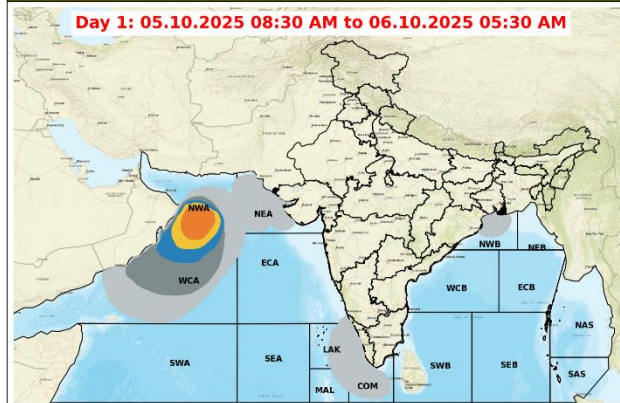
Warning (Take Action)

Probabilistic Forecast

Terms	Probability of Occurrence (%)
Unlikely	< 25
Likely	25 - 50
Very Likely	50 - 75
Most Likely	> 75

\* Red colour warning does not mean "Red Alert". Red colour warning means "Take Action".  
Forecast and Warning for any day is valid from 0830 hours IST of day till 0830 hours IST of next day.  
For more details, kindly visit <https://metsam.ind.gov.in> or contact: 011-2434-4599  
(Service to the Nation since 1875)

## Fishermen Warning Graphics



### Legend

Squally Weather with wind speed 35-45 kmph gusting to 55 kmph	Squally wind with speed 55-65 kmph gusting to 75 kmph
Squally Weather with wind speed 40-50 kmph gusting to 60 kmph	CS with Gale winds with speed 60-80 kmph gusting to 90 kmph
Squally Weather with wind speed 45-55 kmph gusting to 65 kmph	SCS with Gale wind speed 90-110 kmph gusting to 120 kmph
Squally wind with speed 45-55 kmph gusting to 65 kmph	VSCS with Gale wind speed 120-165 kmph gusting to 185 kmph
Squally wind with speed 50-60 kmph gusting to 70 kmph	ESCS with Gale wind speed 165-220 kmph gusting to 245 kmph

Fishermen are advised not to venture into the marked areas.